

HANSA AASHIRWAD

WEST TAMBARAM



Architect Impression only. Specifications subject to change.

COME
HOME TO
SMART,
ARCHITECT
DESIGNED
APARTMENTS!

SPECIFICATIONS

Door / Window Frames	: Seasoned country wood	Wash basin	: One white colour wash basin of standard make in dining.
Shutters	: Windows - seasoned country wood, glass shutters, Door - Well-designed main door, others flush doors	Bath / Toilet	: One EWC in attached toilet and one IWC in common toilet both in white colour and one shower each.
Flooring	: Entire flat area ceramic tiles	Plumbing	: All water supply and drainage lines by rigid PVC pipes
Dadoing	: Bathroom 6' from floor level, kitchen 2' from platform, skirting 4" from floor level	Water	: Bore well
Kitchen	: Granite platform & SS sink; Open shelf with cuddapah slab; one loft	Electrical	: Adequate electrical point in each flat; sufficient number of common lights around the campus
Bedrooms	: Open wardrobe with RCC slabs in all bedrooms, one loft above wardrobe in all bedrooms; provision for A/C in Master Bedroom.	Painting	: External wall - two coats of cement paint with one coat of primer. Internal wall - cement paint with one coat of primer

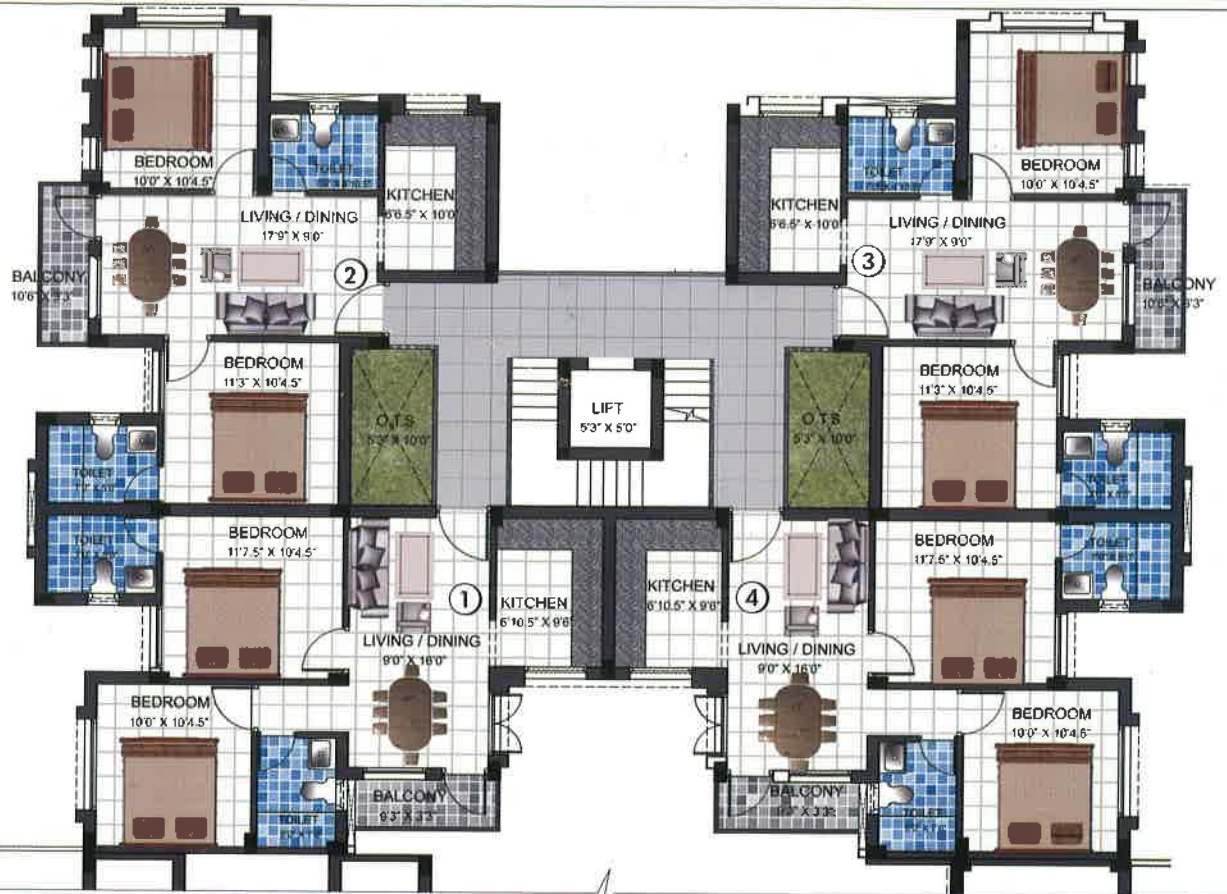
Your own home at West Tambaram, Chennai. These architect designed deluxe apartments are built over 17.5 grounds, with thoughtful features to make your life comfortable.

A Block



Flat NO.	A1	A2	A3	A4	TYPICAL FLOOR PLAN (GROUND, FIRST & SECOND)
Sq.ft Area	809	805	808	806	

B Block



Flat NO.	B1	B2	B3	B4	TYPICAL FLOOR PLAN
Sq.ft Area	809	809	809	800	(GROUND, FIRST, SECOND & THIRD)

C Block



Flat NO.	C1	C2	TYPICAL FLOOR PLAN
Sq.ft Area	802	745	(GROUND, FIRST, SECOND & THIRD)

D Block



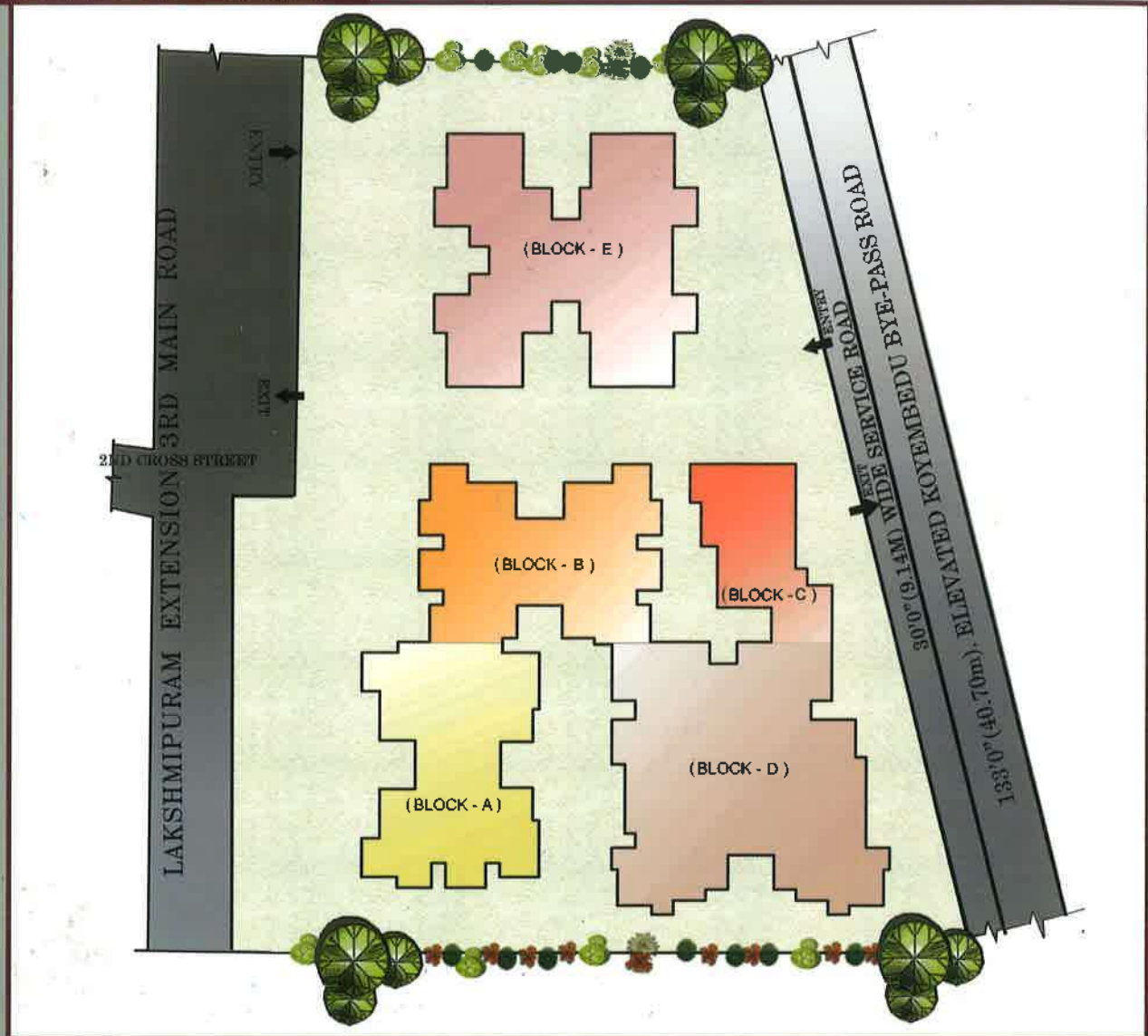
Flat NO.	D1	D2	D3	D4	D5	D6	TYPICAL FLOOR PLAN (GROUND, FIRST, SECOND & THIRD)
Sq.ft Area	797	817	849	791	813	798	

E Block



Flat NO.	E1	E2	E3	E4	TYPICAL FLOOR PLAN (FIRST, SECOND, THIRD & FOURTH)
Sq.ft Area	1104	1104	1191	1191	

SITE PLAN



Activity / Stage of Construction

Payment Schedule

Booking amount (Balance) payable within 30 days from the initial payment

20%

Within 60 days from the date of booking

15% + Regn Expenses

Basement

15%

Ground floor slab

10% + TNEB / Sewage deposit

First floor slab

10%

Second floor slab

10%

Third floor slab

10%

Brickwork

5% + Corpus fund

Handing over

5%

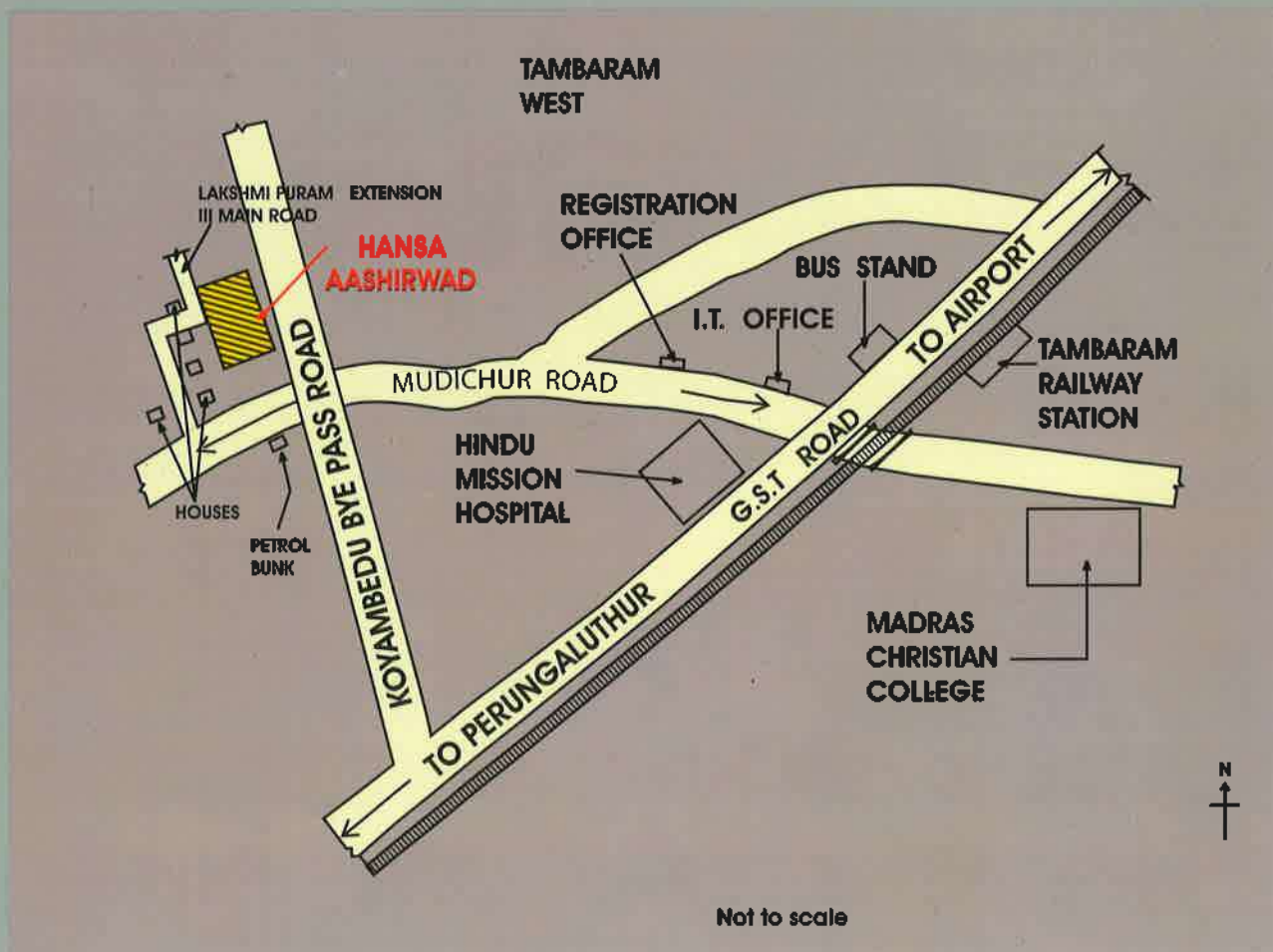
The information contained herein is subject to change as may be required and cannot form part of an offer or contract. While every reasonable care has been taken in providing this information, the Company or its representatives cannot be held responsible for any inaccuracies.

The Company reserves its rights to make alterations, additions and amendments, as may be necessitated from time to time, without assigning any reason.

Amenities

- Landscaped garden ● Lift : One five passengers lift will be provided in each block
- Covered / open car parking ● Water treatment plant ● Internet wiring in each apartment
- Intercom facility for security and between flats ● Play area for children with play equipment
- Common servant toilet ● Jogging track ● Cable TV wiring ● Sewage treatment plant
- Indoor Games (Table Tennis, Carom & Chess) ● Outdoor games (Basketball ring, Shuttle & Badminton Court)

Location Plan



 **HANSA Estates**

Sharika Mansion | No.2 | Lake Area 1st Street | Nungambakkam | Chennai - 600 034.
 Cell: 98404 64567, 93807 79070, 98407 08073 | Ph. 4221 0343/ 0350/ 0358/ 0300
 Email: sales@hansaestates.com